

# Lincoln Stamp Club

**SOUVENIR SHEET**  
JULY 2016

**OFFICERS**

President:  
*Ken Pruess ('16)*  
Vice President:  
*Mark Sellhorn ('16)*  
Secretary:  
*Joyce Rivera ('16)*  
Treasurer:  
*Dave Wallman ('16)*  
Board Member:  
*Joel Johnson ('16)*  
Board Member:  
*Carl Marks ('16)*

**EXCHANGES**

Manager: *John Schultz*

**PRINT & WEB**

Editor: *David M. Frye*

**MEETINGS**

The Club meets the first and third Thursdays, 7:00–8:30 p.m.

**LOCATION**

St. Paul U.M. Church  
1144 M St.  
Lincoln, Neb.

**CONTACT**

E-mail:  
[questions@lincolnstampclub.org](mailto:questions@lincolnstampclub.org)  
Web:  
[www.lincolnstampclub.org](http://www.lincolnstampclub.org)  
Facebook:  
[www.facebook.com/LincolnStampClub](http://www.facebook.com/LincolnStampClub)  
Mail:  
PO Box 57434  
Lincoln, NE  
68505-7434.

**AFFILIATION**

An American Philatelic Society affiliate:  
APS #0799-064882.

**A Less-Than-Routine Use**

## 8¢ “General” Definitive at Work 7 Years after Issuance



**Geneva to Saugerties:** A horizontal pair of the 8c General John J. Pershing issue of 1961 is tied to a newspaper’s business reply mail envelope with a maroon circular date stamp. The pair, totaling 16c, covered the first-class mailing for two BRM envelopes (6c each) and twice the per-piece BRM service charge of 2c.

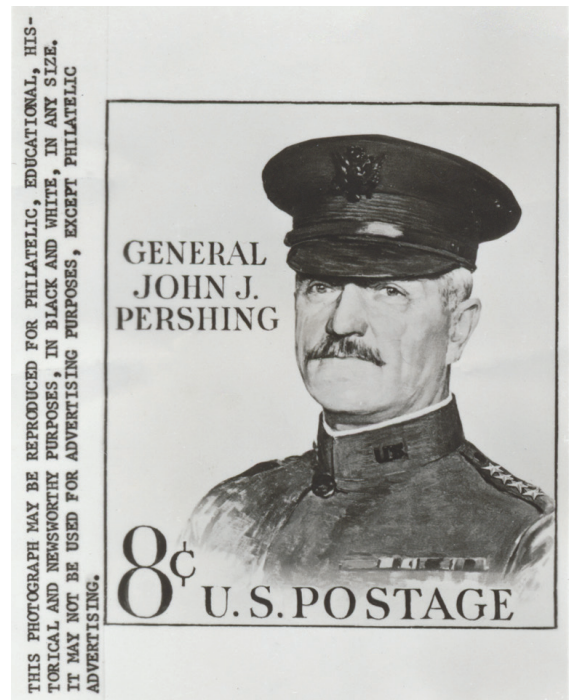
*by David Frye, Editor*

For decades after its release on Nov. 17, 1961, the 8¢ General John J. Pershing issue was regarded, by collectors, as part of the Liberty Series (Scott #1042A). Several years ago, in recognition of many collectors’ changed opinions and supporting research drawing upon the archives of the U.S. Post Office Department, the catalogue publisher reassigned the stamp to #1214.

When its release was announced, the USPOD noted, “This stamp will ultimately replace the 8-cent Statue of Liberty design ...” (“Philatelic Release No. 131,” Oct. 18, 1961).

If you’ve spent any time digging through boxes of covers at shows or in your attic, your little bit of anecdotal evidence will tell you that this stamp did not see a huge amount of use. When it was released, it would have paid for first-class surface mail for a two-ounce

**See Pershing Stamp, p. 3**



**Publicity Photo:** The U.S. Post Office Department distributed photos of stamp artwork to news outlets.

Source: Author's Collection

Source: Author's Collection



### “Trailblazing: 100 Years of Our National Parks”

The exhibit, which opened June 9 at the Smithsonian’s National Postal Museum, celebrates the centennial of America’s national parks. The exhibition, on display through March 25, 2018, chronicles the intersections between the mail and the parks.

Featuring numerous objects from the museum’s philatelic collection, as well as original postage stamp art from the U.S. Postal Service and artifacts lent by the National Park Service, “Trailblazing” explores the myriad ways that mail moves to, through and from the national parks. Visitors can reflect on the incredible diversity of national parks—seashores, monuments, battlefields, historic sites and more—while exploring the origins of the national parks and historic sites.

**Web:**  
[www.postalmuseum.si.edu](http://www.postalmuseum.si.edu)

## July 2016 Exchange

The Club offers the following items at its monthly exchange. Make payments in cash or in personal checks made out to the Club. Proceeds from the sale of donations benefit the Club’s general work. The seller’s initials appear in the last column. **LSC** lots are donations. Number your lots before the meeting.

Lot #	Description	Catalogue	Minimum	Final	Buyer	Seller
▪ 01	US Sc. 1528 Bl of 8 M (Horse Racing)	\$3.25	\$1.00	_____	_____	LSC
▪ 02	US Sc. 1712–1715 Bl 12 M (Butterflies)	\$3.25	\$1.00	_____	_____	LSC
▪ 03	US Sc. 1757a–h Bl 8 M (Canada Exhibit)	\$2.00	\$0.50	_____	_____	LSC
▪ 04	US Sc. 1912–1919 Bl 8 M (Space)	\$3.25	\$1.00	_____	_____	LSC
▪ 05	US 1989 Commem. Book M Assorted	\$22.00	\$5.00	_____	_____	LSC
▪ 06	US Sc. 2967 Sheet M (Marilyn Monroe)	\$24.00	\$6.00	_____	_____	LSC
▪ 07	Cameroon Sc. 460–468 Set M	\$7.40	\$2.00	_____	_____	LSC
▪ 08	Canada Assortment U	\$—	\$0.75	_____	_____	LSC
▪ 09	Congo J47 U	\$0.45	\$0.10	_____	_____	LSC
▪ 10	Great Britain Sc. 1791–1795 Strip M	\$5.00	\$2.50	_____	_____	LSC
▪ 11	Greece U Assortment	\$0.80	\$0.10	_____	_____	LSC
▪ 12	Guatemala Sc. 294 U	\$0.55	\$0.20	_____	_____	LSC
▪ 13	Guinea Sc. 336–339 Set U	\$1.05	\$0.40	_____	_____	LSC
▪ 14	Iceland Assortment U	\$—	\$0.50	_____	_____	LSC
▪ 15	Latvia Sc. 363–368 Set M	\$0.80	\$0.20	_____	_____	LSC
▪ 16	Liberia Sc. C78–C81 Set of 4 M	\$0.85	\$0.40	_____	_____	LSC
▪ 17	Mexico Sc. 1345 M	\$0.35	\$0.15	_____	_____	LSC
▪ 18	Mongolia Large Assortment U	\$—	\$1.50	_____	_____	LSC
▪ 19	Netherlands Good Assortment U	\$—	\$0.80	_____	_____	LSC
▪ 20	Norfolk Island Sc. 122 M	\$0.35	\$0.15	_____	_____	LSC
▪ 21	State of Oman Bl U	\$—	\$0.50	_____	_____	LSC
▪ 22	Romania Sc. 3769 M	\$0.20	\$0.10	_____	_____	LSC
▪ 23	Slovenia Sc. RA4 M	\$0.20	\$0.10	_____	_____	LSC
▪ 24	Spain Sc. 1608 M	\$0.20	\$0.10	_____	_____	LSC
▪ 25	Sri Lanka Sc. 478 U	\$0.20	\$0.10	_____	_____	LSC

## Update: Holocaust Stamps Project

For the past several years, the Lincoln Stamp Club has checked in periodically to hear about the progress of the Foxboro Regional Charter School’s project to collect 11 million postage stamps, one for each person killed in the Holocaust. As of June 8, 2016, the count has grown quite large: **7,385,661 stamps**.

The project involves students and families in several major goals:

- Educating individuals about the dangers of prejudice, discrimination, and bullying
- Promoting tolerance, acceptance, and respect for diversity
- Raising awareness of the magnitude and impact of 11 million innocent lives lost as a result of the Holocaust.

**Web:** [www.foxboroughrcs.org/students-families/frcs-holo1stamp-project/](http://www.foxboroughrcs.org/students-families/frcs-holo1stamp-project/)



## Stamping for Fun on a Hot June Day

Rowan Frye, a nephew of David Frye, along with members of his family, recently found various stamps that piqued their interest. Rowan decided to create his own philatelic version of the U.K.’s Union Jack.

Pershing Stamp, cont. from p. 1

## Definitive Paid an Obscure Rate

letter. Later, beginning Jan. 7, 1963, the stamp would have paid for a one-ounce domestic air mail letter. By the time the cover depicted here was mailed, the first-class surface rate had moved to 6¢, somewhat orphaning the issue.

The cover, however, does capture a more obscure rate. Business reply mail (BRM) enabled a respondent to use a sender-supplied letter, such as the one in this illustration, to reply to a piece of business communications. As the box in the upper-left corner of the cover notes, "Postage Will be Paid by Addressee." In this case, the newspaper, the *Catskill Mountain Star*, published from 1922 to 1970, received two such envelopes and then paid the postage and BRM charges. The first-class rate at the time was 6¢ and the BRM charge per piece was 2¢. Thus, each Pershing issue met precisely the charge for one BRM envelope.

The horizontal pair is attached to a portion of the left-hand selvage from the pane of 100 stamps. The two "khaki" bars, as the postal release named the color, are artifacts of the Cottrell presses used by the U.S. Bureau of Engraving and Printing to produce the stamps.

The stamp was dedicated at the American Stamp Dealers Association Exhibition in New York. At the ceremony, U.S. Postmaster General J. Edward Day offered some explanation for the issue's release. He stated,

Since assuming office, I have increased the international mail rate from eight cents to eleven cents, and a third Statue of Liberty stamp was issued [June 15, 1961], in the eleven cent denomination, featuring a red frame and a blue center.

The new stamp created a certain amount of confusion among our mail clerks and postmen who, in the rush of moving what amounts to 65 billion pieces of mail a year, often found themselves mistaking the eleven cent Statue of Liberty stamp for the eight cent stamp, and vice versa.

Thus we found it desirable to substitute a new design for the eight cent Statue of Liberty, which is now used primarily as domestic postage—for parcel post, double first class postage, and the like, rather than as international postage ("Philatelic Release No. 136," Nov. 17, 1961).

So, in the end, this cover makes a nice addition to my collection of postal uses of 1961 U.S. issues. It has shown me that intriguing uses that expose me to unexplored postal history niches are out there, awaiting discovery.

If you have an area that has served as the focus of your collecting for some time, perhaps you can find some new angle that helps you to see familiar items in a fresh light.

World Renowned Public Auctions Since 1885 • Online Auctions • Many Personalized Services **Kelleher's**

## Something very special.

(And FREE to all serious philatelists)



*A unique (and rather spectacular) magazine that serves as our house organ. But it's so much more than that.*

**Introducing Kelleher's Unique 72-page magazine!**

Write or email us today with your mailing address! Kelleher's Collectors Connection is a wonderful bi-monthly worldwide stamp magazine full of delightful, well-written, knowledgeable articles, features and news about the serious side of stamp collecting. We think you'll agree, there's never been anything like it. Edited in print and online editions by Randy L. Neil.

*Especially for philatelists from America's oldest philatelic auction firm.*

**Daniel T. Kelleher Auctions**  
America's Oldest Philatelic Auction House • Established 1885

4 Finance Drive, Suite 100 • Danbury, CT 06810  
Phone: 203.297.6056 • Toll Free: 877.316.2895 • Fax: 203.297.6059  
Email: info@kelleherauctions.com  
www.kelleherauctions.com

**Write for your free subscription: info@kelleherauctions.com**

## Omaha Stamp Show Seeks Exhibits

This fall's Omaha stamp show, running September 10–11, 2016, offers exhibitors the opportunity to participate in an American Philatelic Society World Series of Philately stamp show. The exhibits chairman, **Mike Ley**, who is also a member of the Lincoln Stamp Club, is seeking both single-frame (\$20 fee) and multiple-frame (\$10/frame fee) exhibits. If you are interested, please ask for more info:

Mike Ley, Exhibits Chairperson  
330 Sonja Drive, Doniphan, NE 68832  
402.984.5010 • giscougar@aol.com.

## Club Receives Generous Donation

The Lincoln Stamp Club recently received a donation of a large quantity of first-day covers and programs. The donors, Marilyn and Lee Coffin, are from Beatrice. Lee's father, Leigh Coffin, was Beatrice's postmaster for many years and participated in several first-day ceremonies in Nebraska, preparing covers for those events. He also received covers and programs from similar events in other states. Some Nebraska events ended with many unsold covers. Some of these donations will be given free to members. Others may be used as gifts at LINPEX 2017.

## Topics: "1960s Tanzanian Air Mail" Exchange, Business

The Club meets at a central Lincoln location from 7:00 p.m. to 8:30 p.m. on the first and third Thursdays each month:

St. Paul United Methodist Church  
1144 M St., Lincoln, Neb.

Go south on 11th Street, then turn left into the church's garage between N and M Streets. Take the elevator to the *main* floor, Rm. 155. Street parking is available too.

## Welcome!

The Lincoln Stamp Club welcomes guests to every meeting of the Club and encourages collectors of all interests and experience to consider joining. Dues are only \$12/year, and can be mailed to the Club at its address on the front page or brought to a meeting. Membership forms are on the Web:

- **Membership:** [www.lincolnstampclub.org/membership/](http://www.lincolnstampclub.org/membership/).

- **Meeting & Exchange:**  
Thurs., July 7, 2016.
- **Program and Show & Tell:**  
Thurs., July 21, 2016: "*1960s Tanzanian Air Mail*" by **David Frye**.
- **Meeting & Exchange:**  
Thurs., Aug. 4, 2016.
- **Program:** Thurs., Aug. 18, 2016: *Program Topic to Be Announced*.

## Find us on

The Lincoln Stamp Club has taken its first steps into the world of social media by launching its new Facebook page. If you are on Facebook, please "like" the Club and share its updates with your circle of friends. Now is a good time to sign up and get your own free Facebook account.

- **Facebook:** [www.facebook.com/LincolnStampClub](http://www.facebook.com/LincolnStampClub).

## SPECIAL OPPORTUNITY

### Items for Upcoming Exchanges

If you would like to include items in the Club's monthly exchange, give your descriptions and prices to **John Schutlz (jschultz2@neb.rr.com)** by **July 15, 2016**. The next exchanges are set for **August 4** and **September 1**. These exchanges will feature items from Club members and from donors. Get your attractive lots listed! Forms for your items are available online.

- [www.lincolnstampclub.org/downloads/SmallExchangeSheets.pdf](http://www.lincolnstampclub.org/downloads/SmallExchangeSheets.pdf)
- [www.lincolnstampclub.org/downloads/ExchangeForm4up.pdf](http://www.lincolnstampclub.org/downloads/ExchangeForm4up.pdf).

## Stamp Shows Across the State

### Omaha Stamp Show

Sat., Sept. 10, and Sun., Sept. 11  
Metro Community College—South Campus  
2909 Babe Gomez Ave., Omaha, Neb.

### LINPEX '17

Mark Your Calendars:  
Saturday and Sunday,  
February 25–26, 2017.



LINCOLN STAMP CLUB  
PO BOX 57434  
LINCOLN NE 68505-7434

