

Lincoln Stamp Club

Souvenir Sheet August 2011

The Lincoln Stamp Club's monthly news

2011 Officers

President:

George Wagner

Vice President:

Chuck Craig

Secretary:

David M. Frye

Treasurer:

Ron Ecklund

Board Member:

Joel Johnson

Board Member:

Carl G. Marks

Meetings

The Club meets the first and third Thursdays, 7–9 p.m.

Location

St. Paul United Methodist Church
1144 M St.
Lincoln, Neb.

Contact

E-mail:

questions@lincolnstampclub.org

Web:

www.lincolnstampclub.org

Mail:

PO Box 57434
Lincoln, NE
68505-7434

Affiliation

The Club is an affiliate of the American Philatelic Society: APS #0799-064882.

Sorting a Hoard, One Stamp at a Time

Editor's Note: Amber Wesely and her son, Sam, have volunteered to sort all of the stamps in the bins we pull out each February for the Kids' Table at LINPEX. As they have made their way through this stash of stamps, they have a progress report and several suggestions for us to consider as we prepare our surplus stamps for donation.

by Amber Wesely

I just thought I would let you know how the sorting project is coming. We have gone through three and one-half of the five totes. I have cleaned house, meaning I have gotten rid of a lot of old half-filled boxes, moldy stamps (I don't know what that is about.), and miscellaneous odds and ends (Christmas ivy, scrap paper, return address labels, etc.). Things are starting to shape up!

If the U.S. stamp is damaged (torn or cut), then it is getting tossed. I am doing that somewhat with the foreign stamps too, but I am not so "demanding" of their shape—they have come a long way!

I have also sorted them out as U.S., foreign, air mail, certified mail, strips of three or more U.S. stamps, miscellaneous "tax" stamps, corners of stamped envelopes, and Easter seals.

Here are some suggestions for those who

make donations:

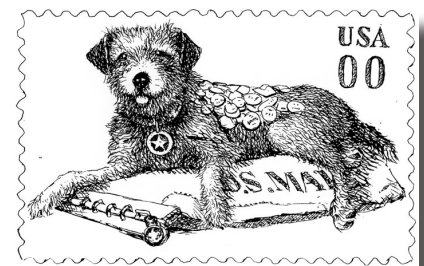
- If the stamp is not what you would save, please do not donate it. This means that if it is ripped, if the top or side is missing, if it bears cancellation so heavy you can't read the stamp, please do not save it. No one else wants it either.
- Remove excess paper. I am not talking about soaking the stamps, but we don't need the front and back corner of the envelope—just the portion with the stamp. You would be surprised how much extra paper I have torn off the stamps. Talk about taking up a lot of room!
- Donate the stamps already separated—U.S. from foreign. This would help us keep them separate in the future.
- Last, check with the other person before you donate an envelope with his or her name and address on it. In this day and age of stolen IDs, I am really surprised at the number of items we have with this information on it. I have not thrown any whole envelopes away, but I know I would not be happy to know that my information is just being "given" away to strangers at a stamp show.

If you have a donation to make to the Kids' Table, bring your stamps to one of the Club's meetings or contact one of the officers to make arrangements. Thanks!

A Postal Treasure: www.BeyondthePerf.com

The U.S. Postal Service shares a trove of details about its postage stamps on *Beyond the Perf*, its Web site companion to the *USA Philatelic* catalogue. This year, the 2012 commemorative program is being revealed one stamp a day, weekday mornings at 6:30 a.m. CDT.

In addition, background on current issues, such as a gallery of sketches leading to the Owney, the Postal Dog issue, is posted. Even more information about Owney is archived at www.postalmuseum.si.edu/owney/.



One of Bill Bond's preliminary sketches of Owney, the Postal Dog—U.S. Postal Service, www.BeyondthePerf.com.

**USPS Releases—
August 2011**

Aug. 11: *Flags of Our Nation*; ten forever rate (44¢) com.—Northern Marianas, Ohio, Oklahoma, Oregon, Pennsylvania, Puerto Rico, Rhode Island, South Carolina, South Dakota, and Tennessee; Columbus, Ohio.

Aug. 12: *Eid*; single forever rate (44¢) com.; Columbus, Ohio.

Aug. 19: *Pixar Films*; five forever rate (44¢) com.; Anaheim, Calif.

Aug. 24: Edward Hopper; single forever rate (44¢) com.; Provincetown, Mass.

WANTED

MEMBERS OR GUESTS TO TELL A STAMP STORY

The Lincoln Stamp Club invites you to share your philatelic passion by giving a presentation at one of our meetings or by writing a short article for our newsletter. If you are interested, or want to find out more, e-mail questions@lincolnstampclub.org or talk to the Club's officers.

LINPEX 2012

Mark your calendars for our next show, LINPEX 2012, Feb. 25–26, 2012, at the GuestHouse Inn, Suites, and Conference Center. Expect dealers, show cover, and member exhibits.

Programs: Switzerland, Mexico, and Bellefonte

The Club's meetings are all held at a single location:

St. Paul United Methodist Church
1144 M St., Lincoln, Neb.

Go south on 11th Street, then turn left into the church's parking garage between N and M Streets. Take the elevator to the second floor.

- **Business Meeting & Exchange**
Thursday, August 4, 7:00–9:00 p.m.
- **Presentation:** "Switzerland's Thirteen Types of Postal Stationery" (*American Helvetia Philatelic Society DVD*)

Thursday, August 18, 7:00–9:00 p.m.

- **Business Meeting & Exchange**
Thursday, September 1, 7:00–9:00 p.m.
- **Presentation:** *Mexico Exportas—Stamps and Postal History*, Ken Pruess, Thursday, September 15, 7:00–9:00 p.m.
- **Business Meeting & Exchange**
Thursday, October 6, 7:00–9:00 p.m.
- **Presentation:** *Report from the 6th Annual APS Postal History Symposium*, David Frye, Thursday, October 20, 7:00–9:00 p.m.



LINCOLN NE 68505-7434
PO BOX 57434
LINCOLN STAMP CLUB