

Lincoln Stamp Club

SOUVENIR SHEET APRIL 2016

OFFICERS

President:

Ken Pruess ('16)

Vice President:

Mark Sellhorn ('16)

Secretary:

Joyce Rivera ('16)

Treasurer:

Dave Wallman ('16)

Board Member:

Joel Johnson ('16)

Board Member:

Carl Marks ('16)

EXCHANGES

Manager: John Schultz

PRINT & WEB

Editor: David M. Frye

MEETINGS

The Club meets the first and third Thursdays, 7:00–8:30 p.m.

LOCATION

St. Paul U.M. Church
1144 M St.
Lincoln, Neb.

CONTACT

E-mail:

questions@lincoln-stampclub.org

Web:

www.lincolnstampclub.org

Facebook:

www.facebook.com/LincolnStampClub

Mail:

PO Box 57434
Lincoln, NE
68505-7434.

AFFILIATION

An American Philatelic Society affiliate:
APS #0799-064882.

The Second Installment of an Insider's Findings

Former Postal Inspector Reveals Growth of Counterfeiting

by David Frye, Editor

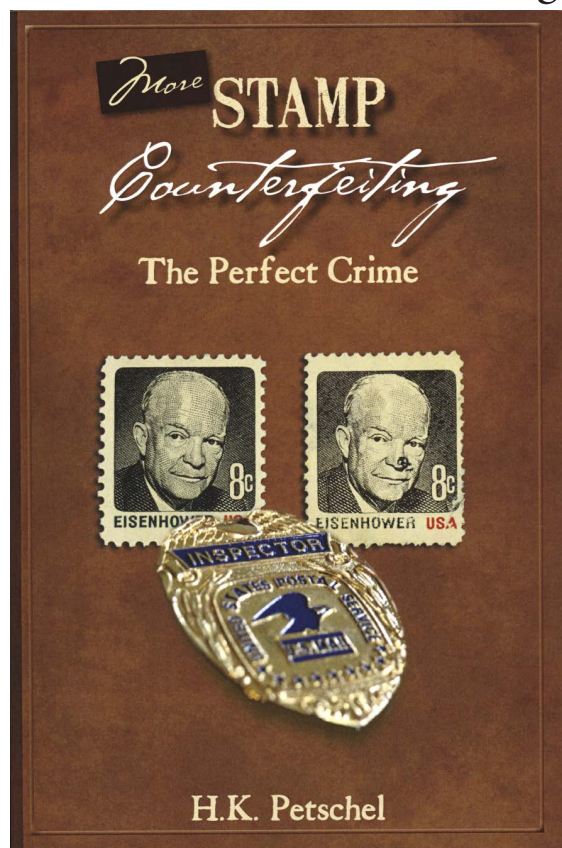
One of the perennial pieces of advice for writers goes like this: "Write about what you know." H.K. Petschel, a retired postal inspector with the U.S. Post Office Department and the Postal Service, has taken that advice to heart. In *More Stamp Counterfeiting: The Perfect Crime*, he builds upon the foundation he laid with *Stamp Counterfeiting: The Evolution of an Unrecognized Crime*.

In a narrative that reads like a series of true-crime stories, Petschel resumes his account with the three-cent Prexie that features Thomas Jefferson. Then, following relatively quiet decades in the 1940s and 1950s, the "perfect crimes" he traces pick up their pace in the 1960s and 1970s.

While he knows and communicates clearly the technical elements of stamp production and counterfeiting, he brings a straightforward and conversational tone to his storytelling. For instance, in this excerpt from p. 92, he begins to set the stage for exploring how the ten-cent crossed flag definitive becomes the target of counterfeiters:

What happened in Chicago can best be described as a handyman's approach to stamp manufacturing. Apparently one day while looking at a sheet of the 10-cent postage stamp, Heinz Burg thought, "Hey, I could make these." Besides, Christmas was coming up and he concluded that everyone could use a little extra cash for the holidays. His thinking was that he could make money printing these items, and his customers would also be able to save some money on their Christmas mailing. Everybody wins—except the Post Office.

Petschel includes case numbers and the occasional footnote, giving some additional tips to



Sequel— H.K. Petschel's follow-up volume continues the account begun in "Stamp Counterfeiting: The Evolution of an Unrecognized Crime."

anyone who would want to dig further into the counterfeiting history of particular issues. His study focuses only on U.S. stamps, keeping the attention on the history he encountered as an official for the U.S. Postal Inspection Service.

Black-and-white photographs scattered throughout the book give the reader ample illustrations of both the legitimate and counterfeit versions of many of the issues explored.

The book would make an informative addition to your philatelic reference library.

More Stamp Counterfeiting: The Perfect Crime
Author: H.K. Petschel

Publisher: Sandpoint, Idaho, HKP Publications.
ISBN-13: 978-1-879628-46-5; List Price: \$28.00.
Size: 6" × 0.5" × 9"; Length: 210 pages.

April 2016 Exchange

The Club offers the following items at its monthly exchange. Make payments in cash or in personal checks made out to the Club. Proceeds from the sale of donations benefit the Club's general work. The seller's initials appear in the last column. LSC lots are donations. Number your lots before the meeting.

Lot #	Description	Catalogue	Minimum	Final	Buyer	Seller
▪ 01	Denmark Sc. 1033, 1061-62 CTO	\$6.00	\$0.50	_____	_____	KP
▪ 02	Viet Nam Sc. 12 CTO	\$3.00	\$0.25	_____	_____	KP
▪ 03	US Express Large High Face	\$?	\$12.50	_____	_____	KP
▪ 04	World 30+	\$?	\$4.00	_____	_____	KP
▪ 05	US Sc. 684 Used on Cover	\$2.00	\$0.50	_____	_____	LSC
▪ 06	US Sc. 2647-96 M Sheet	\$40.00	\$30.00	_____	_____	LSC
▪ 07	US Sc. 3068a-t M Sheet	\$13.00	\$8.00	_____	_____	LSC
▪ 08	US Sc. 3222-25a M Sheet	\$13.00	\$8.00	_____	_____	LSC
▪ 09	US Sc. 3307 M Sheet (10)	\$14.00	\$8.00	_____	_____	LSC
▪ 10	US Many Plate Blocks U	\$?	\$0.75	_____	_____	LSC
▪ 11	US Large Collection on Paper	\$?	\$1.50	_____	_____	LSC
▪ 12	Åland Islands Sc. 67a M Booklet	\$17.50	\$5.00	_____	_____	LSC
▪ 13	Antigua Sc. 562-567 M	\$1.00	\$0.50	_____	_____	LSC
▪ 14	Argentina Sc. 1067-71 M	\$1.50	\$0.50	_____	_____	LSC
▪ 15	Argentina Bundle U	\$?	\$0.50	_____	_____	LSC
▪ 16	Chile Sc. 348A M	\$0.75	\$0.30	_____	_____	LSC
▪ 17	China (People's Rep.) Sc. 662+4 U	\$7.50	\$0.50	_____	_____	LSC
▪ 18	China (People's Rep.) Sc. 2480 M	\$2.00	\$0.75	_____	_____	LSC
▪ 19	Cocos Isles Sc. 43, 49-50 on piece	\$6.50	\$1.00	_____	_____	LSC
▪ 20	Ecuador U Mix	\$?	\$0.50	_____	_____	LSC
▪ 21	Finland Sc. 715a Booklet M	\$2.00	\$0.75	_____	_____	LSC
▪ 22	Finland Sc. 715a Booklet M	\$2.00	\$0.75	_____	_____	LSC
▪ 23	Finland Sc. 820-825 Booklet M	\$9.00	\$4.00	_____	_____	LSC
▪ 24	Finland Sc. 859a Booklet M	\$4.25	\$2.00	_____	_____	LSC
▪ 25	Finland Sc. 859a Booklet M	\$4.25	\$2.00	_____	_____	LSC
▪ 26	German D.R. Sc. 2221-25 CTO	\$1.05	\$0.50	_____	_____	LSC
▪ 27	Hungary Assorted U	\$?	\$0.50	_____	_____	LSC
▪ 28	Israel Sc. 127 w/Tab M	\$0.20	\$0.10	_____	_____	LSC
▪ 29	Nevis Sc. 209 M	\$0.70	\$0.30	_____	_____	LSC
▪ 30	Mongolia Sc. C37, C39 Used	\$0.40	\$0.10	_____	_____	LSC

Update: Holocaust Stamps Project

My pride is showing! I hope you'll take a few minutes to watch my first online slideshow about the Holocaust Stamps Project. The year it began in my classroom (2009-2010), the students counted almost 25,000 donated stamps. As of February 23, 2016, the collection has 6,946,089 stamps, about 63 percent of the goal of 11 million stamps. Eleven stamps collages have been completed and three more are in progress.

Charlotte Sheer

VIDEO: www.vimeo.com/158579929

PROJECT: www.foxboroughrcs.org/students-families/frcs-holocaust-stamp-project/

Philatelic Web Portal

A new portal that curates links to online philatelic resources recently went live on the Web. It groups links by categories like exhibits, societies, specialties, and magazines.

SITE: www.stampontheweb.com

From the Web Site

Are you interested in buying a bunch of old stamps at cost? I have full sheets of Elvis, John Wayne, Marilyn Monroe, and a lot of others. If interested, contact me and we'll set up a time and meeting place. Thanks.

Don Van Arsdall

E-MAIL: onenonlydonv@yahoo.com

Source: www.usps.com



Shirley Temple: Movie Star and Diplomat

By releasing the twentieth stamp in the Legends of Hollywood series on April 18, the USPS will honor actress and diplomat Shirley Temple Black (1928-2014).

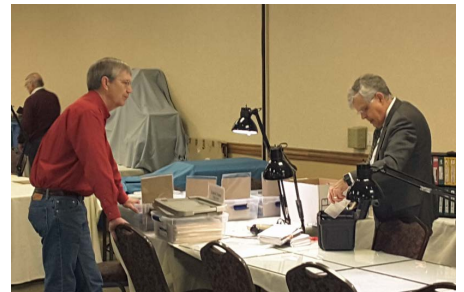
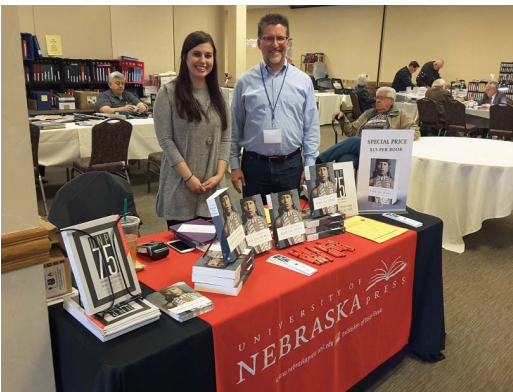
As a child, Temple was the most famous film star in the world.

As an adult, she had a distinguished career in diplomacy, serving as a delegate to the United Nations, as the U.S. ambassador to Ghana and Czechoslovakia, and as the U.S. Chief of Protocol. She received the Kennedy Center Honors in 1998 and a lifetime achievement award from the Screen Actors Guild in 2006.

The stamp's design features a painting by Tim O'Brien, which he based on a 1935 still image from *Curly Top*, a movie showcasing her iconic rôle.

Source: about.usps.com/news/national-releases/2015/pr15_069.htm

LINPEX '16: Stamp Show Draws Collectors, Commemorates Black Elk



Sources: Mark Sellhorn and David Frye

Show Shots: Held Feb. 27–28, 2016, the annual stamp show attracted young and seasoned philatelists with chances to hunt at the Beginners' Table, search through dealers' stocks, view exhibits, learn about stamps, and get caught up with friends.

Topics: "Members' Show & Tell," Exchange, & Business

The Club meets at a central Lincoln location from 7:00 p.m. to 8:30 p.m. on the first and third Thursdays each month:

St. Paul United Methodist Church
1144 M St., Lincoln, Neb.

Go south on 11th Street, then turn left into the church's garage between N and M Streets. Take the elevator to the *main* floor, Rm. 155. Street parking is available too.

Welcome!

The Lincoln Stamp Club welcomes guests to every meeting of the Club and encourages collectors of all interests and experience to consider joining. Dues are only \$12/year, and can be mailed to the Club at its address on the front page or brought to a meeting. Membership forms are on the Web:

- **Membership:** www.lincolnstampclub.org/membership/.

- **Meeting & Exchange:** Thurs., April 7, 2016.
- **Program:** Thurs., April 21, 2016: "*Members' Show & Tell*" by **Stamp Club Members**.
- **Meeting & Exchange:** Thurs., May 5, 2016.
- **Program and Show & Tell:** Thurs., May 19, 2016: "*German Stamps of the Nazi Era*" by **Bob Ferguson**.

Find us on 

The Lincoln Stamp Club has taken its first steps into the world of social media by launching its new Facebook page. If you are on Facebook, please "like" the Club and share its updates with your circle of friends. Now is a good time to sign up and get your own free Facebook account.

- **Facebook:** www.facebook.com/LincolnStampClub.

SPECIAL OPPORTUNITY

Items for Upcoming Exchanges

If you would like to include items in the Club's monthly exchange, give your descriptions and prices to **John Schulz** by **April 15, 2016**. The next exchanges are set for **May 5** and **June 2**. These exchanges will feature items from Club members and from donors. Get your attractive lots listed! Forms for your items are available online. Download and print as many as you need.

- www.lincolnstampclub.org/downloads/SmallExchangeSheets.pdf
- www.lincolnstampclub.org/downloads/ExchangeForm4up.pdf.

Stamp Shows Across the State

Woodson's Stamp Show

9-4, Sat., April 9
Westside Conference Center, Westside Rm.
3534 S. 108th St., Omaha, Neb.

West Omaha Stamp Show

9-5, Sat., May 14 and 9-4, Sun., May 15
Comfort Inn & Suites
7007 Grover St., Omaha, Neb.



LINCOLN STAMP CLUB
PO BOX 57434
LINCOLN NE 68505-7434

