

# Lincoln Stamp Club

## SOUVENIR SHEET FEBRUARY 2012

Monthly News of the  
Lincoln Stamp Club

## 2012 OFFICERS

President:

*Ricky George*

Vice President:

*George Wagner*

Secretary:

*David M. Frye*

Treasurer:

*Ron Ecklund*

Board Member:

*Joel Johnson*

Board Member:

*Carl G. Marks*

## MEETINGS

The Club meets the  
first and third Thurs-  
days, 7:00–9:00 p.m.

## LOCATION

St. Paul United  
Methodist Church  
1144 M St.  
Lincoln, Neb.

## CONTACT

E-mail:

questions@lincoln-  
stampclub.org

Web:

www.lincolnstamp-  
club.org

Mail:

PO Box 57434  
Lincoln, NE  
68505-7434

## AFFILIATION

The Club is an affili-  
ate of the American  
Philatelic Society:  
APS #0799-064882.

# LINPEX 2012: Weathering the Winds

by *David M. Frye*

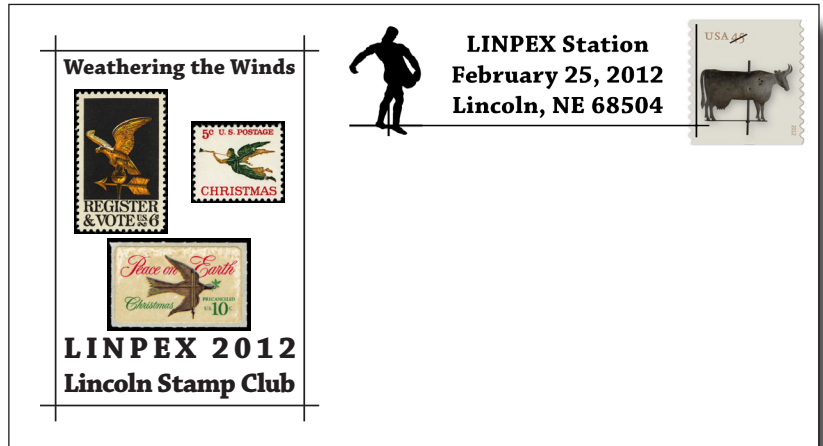
The Lincoln Stamp Club will hold its annual stamp show—LINPEX 2012—on Saturday and Sunday, February 25–26.

The show will feature dealers' tables, members' exhibits, a USPS Postal Station on Saturday with a special show cancel, and \$2 show covers highlighting the recently issued Weather Vane stamps. These are only available in large rolls of 3,000

and 10,000 and are not stocked in local post offices, so the show offers you a chance to acquire sets of these stamps.

The Beginners' Table offers stamps for a penny for youth and a nickel for adults. Members of the public can receive free evaluations of stamps and collections.

This year's show will present exhibits by



The LINPEX cover highlights three past U.S. issues that depicted weather vanes, along with a show cancel that turns the silhouette of the Sower, Nebraska's iconic figure from the state capitol, into a weather vane. The new Weather Vane stamps, issued Jan. 20, in Shelbourne, Vermont, show five different weather vanes from the Shelbourne Museum.

members. For some, this will be their inaugural exhibition. First-time exhibitors will receive a bronze LINPEX medallion.

The show appears at the GuestHouse Inn and Suites, 5250 Cornhusker Hwy. It runs Saturday, 10 a.m. to 6 p.m. and Sunday, 10 a.m. to 3 p.m. Parking is free.

Web: [www.lincolnstampclub.org/linpex](http://www.lincolnstampclub.org/linpex)

## February '12 Club Exchange: Lots of the World

The Feb. 2 exchange will feature several lots:

Lot #	Description	Open			
• 01	Laos, 30+, Mint	\$1.50	• 12	Australia, 40+, Mint	\$12.75
• 02	Portugal, 75+, Mint	\$2.00	• 13	Mixed Europe, 100+	\$2.50
• 03	Greece, 60+, Mint	\$1.50	• 14	Austria in stock book, 1000+, Mint	\$20.00
• 04	Netherlands, 75+, Mint	\$1.50	• 15	Canada in stock book, 250+, Mint	\$10.00
• 05	Turkey, 100+, Mint	\$2.00	• 16	Hungary, 175, Mint	\$4.00
• 06	Yugoslavia, 15, Mint	\$0.50	• 17	Russia, 200+, Mint	\$5.00
• 07	Mixed Mid. East, 75+, Mint	\$1.50	• 18	China, Japan, Other Asia in stock book, 300+	\$10.00
• 08	Senegal, 100+, Mint	\$1.50	• 19	Vatican City, 4 Sheets	\$4.00
• 09	Tonga, 5, Mint	\$1.00	• 20	U.S., 2 sets, Famous Americans 40 each, used	None.
• 10	Hrvatska, 50+, Mint	\$1.50			
• 11	Indonesia, 100+, Mint	\$1.50			

## USPS RELEASES FEBRUARY 2012

**Feb. 14:** *Arizona Statehood*; single forever (45¢) comm., Phoenix, AZ.

**Feb. 14:** *Love Ribbons*; single forever (45¢) special, Colorado Springs, CO.

**Feb. 16:** *Danny Thomas*; single forever (45¢) comm., Memphis, TN.

### Tentative Releases

- *Sunshine Skyway Bridge*; single Priority Mail (\$5.15).
- *Carmel Mission*; single Express Mail (\$18.95).
- **Feb. 6?:** *Heart Health*; single forever (45¢) comm.
- **Feb./March?:** *Bobcat*; single (1¢).
- **Feb./March?:** *Four Flags*; four non-denom. (45¢) forever definitives.

# WANTED

## Items for Our Monthly Exchanges

If you would like to include items in the monthly exchanges, send your descriptions and prices to [questions@lincolnstampclub.org](mailto:questions@lincolnstampclub.org) by the twentieth of the month for inclusion in the following month's newsletter (**February 20 for March 1 exchange**). More significant items, which might require members to research ahead of time, should be sent by the same deadline for the second exchange following the submission (**February 20 for April 5 exchange**).

## Program Offerings

If you have worn out the ears of your relatives telling them about your collecting focus, consider offering a program at one of the Club's meetings. We have listening ears!

## Meetings: Business and National Postal Museum

The Club's meetings are held in one place:

St. Paul United Methodist Church  
1144 M St., Lincoln, Neb.

Go south on 11th Street, then turn left into the church's parking garage between N and M Streets. Take the elevator to the *main* floor.

*Members may bring their exhibit materials to the February meetings and get guidance and tips from more experienced exhibitors in preparing materials for exhibition.*

- **Business Meeting & Exchange**

Thurs., Feb. 2, 2012, 7–9 p.m.

**See front page for list of Exchange Items.**

- **Program:** *National Postal Museum Highlights*

Thurs., Feb. 16, 2012, 7–9 p.m.

+ "All Systems at Work"

+ "Mail by Bus" and "Mail by Rail"

+ "Missing You—Letters from Wartime"

+ "Owney the Postal Dog"

+ "Printing Postage Stamps"

+ ... and more, as time permits!

- **Business Meeting & Exchange**

Thurs., March 1, 2012, 7–9 p.m.

- **Program:** *Topic to be announced*

Thurs., March 15, 2012, 7–9 p.m.

- **Looking Ahead:** April 5, 19; May 3, 17; June 7,

21; July 5, 19.

If You Have "11" by Your  
Name, Send Your 2012 Dues  
of \$8 to the Club Right Now  
to Remain an Active Member.

LINCOLN STAMP CLUB  
PO BOX 57434  
LINCOLN NE 68505-7434