

# LINCOLN STAMP CLUB

## SOUVENIR SHEET DECEMBER 2020

## Club Happenings Last Month

### November 19 Meeting

We again met on Zoom with 11 members joining in. Dale read the following slate for 2021 club officers:

President—LaVonne Uffelman  
Vice President—Brad Shay  
Secretary—Mark Sellhorn  
Treasurer—David Wallman  
Board Member—Curtis Peacock  
Board Member—???

If you would like to serve on the board or know of another member that would, please let one of the officers know before the December 17 meeting. Dale has contacted several dealers about attending a one-day show LINPEX 2021 and has a positive response from 4-6 dealers. Upon a motion and a second, the club voted to proceed with preparations for LINPEX 2021 to be held at the College View Adventist church on February 28, 2021. A decision will be made by February 1 whether to hold LINPEX 2021 depending on health restrictions and concerns. There will be room for up to 24 frames of exhibits, so if you would like to show some of what you collect, please consider exhibiting.

**LaVonne Uffelman** showed a collection of computer-generated stamps organized by the topic (people, places, animals, etc.)

**Dave Hamilton** showed a collection of Atlantic airmail covers with different stamps paying postage for each leg of the journey from sender to a hub (New York, London or Paris) then to another hub, then to the recipient and for any special handling.

**Dale Niebuhr** showed part of his collection of Hitler head stamps and souvenir sheets.

**Mark Sellhorn** showed a miniature 1917 cover so small that the 2c red Washington stamp (Sc. 463?) was placed on the back.

### 2021 Dues

The end of 2020 is rapidly approaching and 2021 will be here in two shakes of a lamb's tail. Please look at the number behind your name on the mailing label. If it does not say "21", please send your dues in to our mail box. We're not sure when in-person meetings will resume, so mailing your dues in will be the best option. And if you do not see a number, please consider joining our club and sharing the joy of stamp collecting with other philatelists.

#### OFFICERS

President:  
*Dale Niebuhr (2020)*  
Vice President:  
*LaVonne Uffelman (2020)*  
Secretary:  
*Mark Sellhorn (2020)*  
Treasurer:  
*Dave Wallman (2020)*  
Board Members:  
*Curtis Peacock (2020)*  
*Brad Shay (2020)*

#### EXCHANGES

Manager: *Dale Niebuhr*

#### APS AMBASSADOR

*Dale Niebuhr*

#### MEETINGS

The Club meets the  
first and third Thursdays,  
7:00–8:30 p.m.

#### LOCATION

St. Paul U.M. Church  
1144 M St.  
Lincoln, Neb.

#### CONTACT

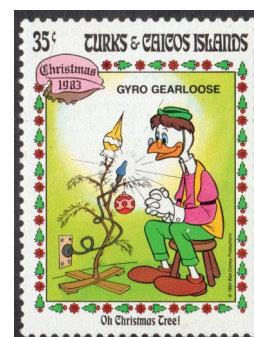
E-mail:  
[questions@lincolnstampclub.org](mailto:questions@lincolnstampclub.org)  
Web:  
[www.lincolnstampclub.org](http://www.lincolnstampclub.org)  
Facebook:  
[www.facebook.com/  
LincolnStampClub](https://www.facebook.com/LincolnStampClub)

Mail:  
PO Box 6756  
Lincoln, NE  
68506-6756

#### AFFILIATION

An American Philatelic Society  
affiliate: **APS #0799-064882.**

# CHRISTMAS TREES





# Diminutive Covers: Relics of a Bygone Mail Era

London, England: 97.0 × 56.5 mm ( $e = 0.58$ )  
 Sollefteå, Sverige: 99.0 × 61.0 mm ( $e = 0.62$ )

**Views:**  
 Images of the four tiny covers are reduced to 77.7% of their full size.



Covers: Author's collection.



by David M. Frye, dfrye@WideSky.biz



**Scale:** The shaded rectangle below depicts a modern 6 3/4 envelope (165.1 × 93.0 mm;  $e = 0.56$ ).

Venezia, Italia: 113.0 × 72.5 mm ( $e = 0.64$ )  
 Vicksburg, Miss.: 99.0 × 61.0 mm ( $e = 0.52$ )

Standing in front of a copypaper-sized box of unsorted and disorganized covers is like stepping onto the hard-packed and wet sand on a beach as the tide recedes and contemplating the shells and bits of seaglass that await discovery. I never know what treasures will reveal themselves as I begin to extract stacks of covers from that box and sort through them.

Various cover features will cause me to stop and look more closely. Most of these features involve origins—former British East Africa and Vatican City—and auxiliary markings—delivery hiccups and special services. I'm attracted to uses of particular stamps: 1961 U.S. issues and post independence KUT (Kenya, Uganda, and Tanganyika/Tanzania).

One feature, however, involves size rather than appearance. Over the years, I've accumulated more than one hundred tiny covers, as they are often called. *Tiny* is a relative term meaning "smaller than normal."

What's normal? Well, that, too, is an inexact term. The gray rectangle displayed here presents the outline

of a 77.7% of its full size to give a visual guide for gauging the tiny size of the four covers, also shown at the same reduced size.

Why include the designation "relics" in this story's title? Modern mail-handling systems are highly automated, and such automation depends upon a certain degree of standardization. The United States Postal Service, for instance, sets both minimum sizes and acceptable proportions for mail pieces. These criteria assure that the letters may pass through the mail-handling machines. Tiny covers do not fare well in such mechanized systems. Thus, letters that are too small cannot be mailed. Envelopes that violate the standards for proportions may be mailed at a higher rate that includes a non-machinable surcharge.

The parenthetical notes in the captions present measures of eccentricity  $e$  determined by dividing the envelope's height by its length. Square envelopes have values of 1.0; horizontal- and vertical-format envelopes have values less than and greater than 1.0, respectively.

## Club Notes

We will be electing next year's officers. We will meet by Zoom, so please join us and cast your vote.

### Welcome

The Lincoln Stamp Club welcomes guests to every meeting of the Club. Dues are only \$12/year and can be mailed to the Club at its address on the front page or brought to a meeting. Membership forms are on the Web: ⓘ Membership: [www.lincolnstampclub.org/membership/](http://www.lincolnstampclub.org/membership/). StampClub.

### Facebook

The Lincoln Stamp Club is on Facebook. Please "like" the Club and share its updates with your circle of friends. ⓘ Facebook: [www.facebook.com/LincolnStampClub](https://www.facebook.com/LincolnStampClub)

## Meetings

ⓘ : **Monthly Meeting:** Thursday, December 17  
Election of 2021 Club officers  
Meeting will be on Zoom

ⓘ : **Monthly Meeting:** Thursday, January 15  
Installation of 2021 Club officers  
Preparations for LINPEX 2021

**At our first in-person meeting, the program will be:**  
***"The Beginners of Modern Philately - Sir Rowland Hill and William Mulready"*** by **Mark Sellhorn**

LINCOLN STAMP CLUB  
PO BOX 6756  
LINCOLN NE 68506-6756

