

# LINCOLN STAMP CLUB

**SOUVENIR SHEET**  
**September 2025**

## Club Happenings Last Month August 14 Meeting

### OFFICERS

President:

*Brad Shay (2025)*

Vice President:

Secretary:

*Mark Sellhorn (2025)*

Treasurer:

*Dave Wallman (2025)*

Board Members:

*Curtis Peacock (2025)*

*Larry Spreeman (2025)*

### EXCHANGES

Manager: *Dale Niebuhr*

### APS AMBASSADOR

*Dale Niebuhr*

### MEETINGS

The Club meets the second  
Thursday, 7:00–8:30 p.m.

### LOCATION

College View Adventist Church  
48th & Prescott St.  
Lincoln, Neb.

### CONTACT

E-mail:

[questions@lincolnstampclub.org](mailto:questions@lincolnstampclub.org)

Web:

[www.lincolnstampclub.org](http://www.lincolnstampclub.org)

Facebook:

[www.facebook.com/  
LincolnStampClub](https://www.facebook.com/LincolnStampClub)

Mail:

PO Box 6756

Lincoln, NE

68506-6756

### AFFILIATION

An American Philatelic Society  
affiliate : **APS #0799-064882.**

### ANNIVERSARY

**1964—2025**

**Sixty-One Years**

### NEWSLETTER

Editor: Mark Sellhorn

**Brad** opened the meeting with 18 members. He read thru the list of new stamps coming out in the near future and announced that the September meeting will be a sale of donated material. We talked about Stamp Collecting Day coming up on October 19th at the church. **Brad** asked everyone to consider helping in some capacity. Again, **Brad** asked everyone to think about a theme for LINPEX 2026. We are leaning toward some theme connected to the 250th anniversary of the birth of our nation. **Brad** also mentioned the idea of a club exhibit at LINPEX 2026. The idea would be to have 16 folks each do one sheet along a common theme (or 32 if we can fill two frames). He asked for suggestions such as the signers of the Declaration of Independence; modes of transportation; progression of the American flag; how to collect stamps, etc.

The following folks won these door prizes of a stock book and:

**Cynthia Carlson** won one with 2 FDS's..

**Marilyn Wiedner** won one with a variety of Christmas stamps.

**Don Ehly** won one with a Christmas card and Christmas cover.

**Brad Shay** won one with a variety of Christmas stamps.

**Brad Shay** passed around a postal stationery cover sent from Thomastown, Conn. in 1962 with the purpose of giving it to a member who collects postal stationery (Tom Johnson).

**Bob Akaki** showed an 1897 cover from St. Paul, MN to Stillwater, MN and franked with what is believed to be Special Delivery stamp Sc. E5 and a 2c red Sc. 267. The enclosed letter from the College of St. Thomas to Stillwater High School was an effort to arrange a football game between the two schools.

**Don Ehly** showed his notebook and spreadsheets that he uses to track the purchase and completeness his collections. It looks quite organized, detailed and the result of dedicated collecting.

**LaVonne Uffelman** talked about her collections displayed for our member show & tell and how she displays some of her sports stamps at various sporting events.

**Mark Sellhorn** showed a 1921 miniature Christmas card and related cover franked with a red 2c Washington (Sc. ???).

The meeting was followed by looking through the collections that members had brought to share with the club.

## New Newsletter Editor Needed

We are still looking for a new editor for the Souvenir Sheet. After 8 years, Mark is retiring with the October issue (his 100th). Editorship can be by a single person or by a small group of interested and creative members. If you are interested, please let any of the officers know.

# Registered Letter Sent from North Bend to Berkeley

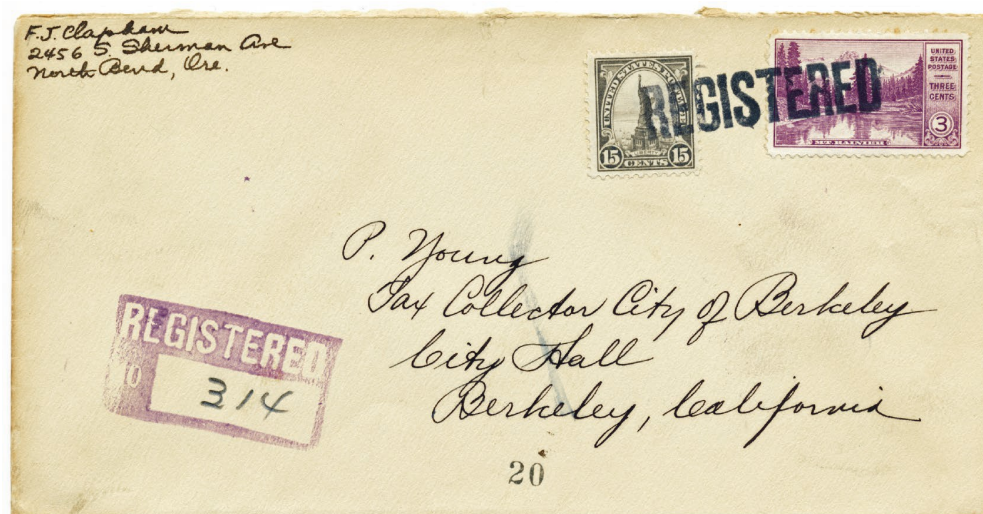
by David M. Frye,  
dfrye@WideSky.biz

The go-to compendium defining and describing the various rates and services provided by the U. S. Post Office Department is U.S. Domestic Postal Rates 1872–2011, Third Edition, by Henry W. Beecher and Anthony S. Wawrukiewicz. In their chapter on Registry Service, the authors note: The registry service developed as a mean of moving valuable material more safely via the US postal system. The system affords special safeguards and great security for mailed matter, and has proved indemnity for loss, rifling, or damage since July 1, 1898 (p. 310).

This letter was franked with two stamps. The 3¢ Mt. Ranier and Mirror Lake stamp from the 1934 National Parks Year Issue paid the prevailing first-class surface-mail rate for a letter not exceeding one ounce. This rate ran from 6 July 1932 to 31 July 1958. Then, the 15¢ Statue of Liberty stamp from the Fourth Bureau definitive series paid the registry service fee—in play from 1 July 1932 to 25 March 1944—to cover an indemnity not to exceed \$5.

Two markings on the front of the envelope make this letter stand out from routine first-class mail. The first is the rectangular purple handstamp that notes the letter was sent “REGISTERED.” The handwritten “314” permitted postal workers charged with handling registered letters to log their interaction with this protected letter. Today, barcodes, which have replaced registry numbers, are scanned at various points on a letter’s journey to provide evidence of the chain of custody.

The second noteworthy marking on the front is the “REGISTERED” cancellation that strikes both stamps. Cancelling the stamps prevented their reuse.



**North Bend, Oregon, to Berkeley, California:** Two magenta circular date stamps on the back of this envelope show that the letter was mailed from North Bend on 7 November 1934 and arrived in Berkeley on 9 November. The sender updated the back’s return address,



But one might ask why the circular date stamps appearing on the back were not used to cancel the stamps. Beecher and Wawrukiewicz provide an explanation: A problem faced the USPS [sic] in 1910 in that postal workers were not checking the reverse side of registered mail that passed through their hands for signs of tampering. Therefore, “effective now” no postmark could be placed on the face of registered matter. Thus, city, date and transmit information had to be placed on the reverse of the matter. In spite of this admonition the former practice continued well into the 1920’s decade ... (pp. 312–313).

Thus, this letter properly bears the cancels that identify the city, date, and departure and arrival information on the back of the letter. The black stamped “20” on the front of the envelope does not appear to correspond to any postal functions. It may be that the office of the tax collector in Berkeley used number stamps to inventory incoming correspondence or to identify the person opening the mail.

Cover: Author's collection



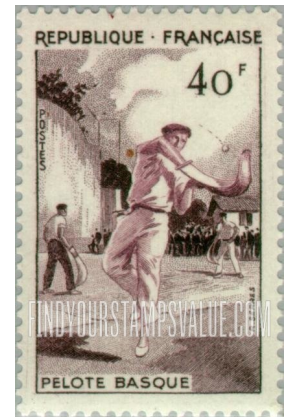
# Sports on Stamps



Cricket



Hammer Throw



Jai-Alai



Table Tennis



Fishing



Pole Vault



Sculling



Shot Putt



Scuba Diving



Curling



Skydiving



Pommel Horse

## Club Notes

We meet in person at our location, College View Adventist Church, 48th and Prescott. Please join us in the company of other philatelists.

### Welcome

The Lincoln Stamp Club welcomes guests to every meeting of the Club. Dues are only \$12/year. Membership forms are on the Web: [www.lincolnstampclub.org/membership/.StampClub](http://www.lincolnstampclub.org/membership/.StampClub).

### Facebook

The Lincoln Stamp Club is on Facebook. Please "like" the Club and share its updates with your circle of friends.  
[Facebook: www.facebook.com/LincolnStampClub](https://www.facebook.com/LincolnStampClub)

## Meetings

: **Meeting: Thursday, September 11**  
**Sale of donated material**

## Coming Up

### Omaha Stamp Show

September 27 & 28  
METROPOLITAN Community College  
2709 Edward Babe Gomez Ave.  
Omaha, NE 68107

### Stamp Collecting Day

October 19  
College View Adventist Church

LINCOLN STAMP CLUB  
PO BOX 6756  
LINCOLN NE 68506-6756

